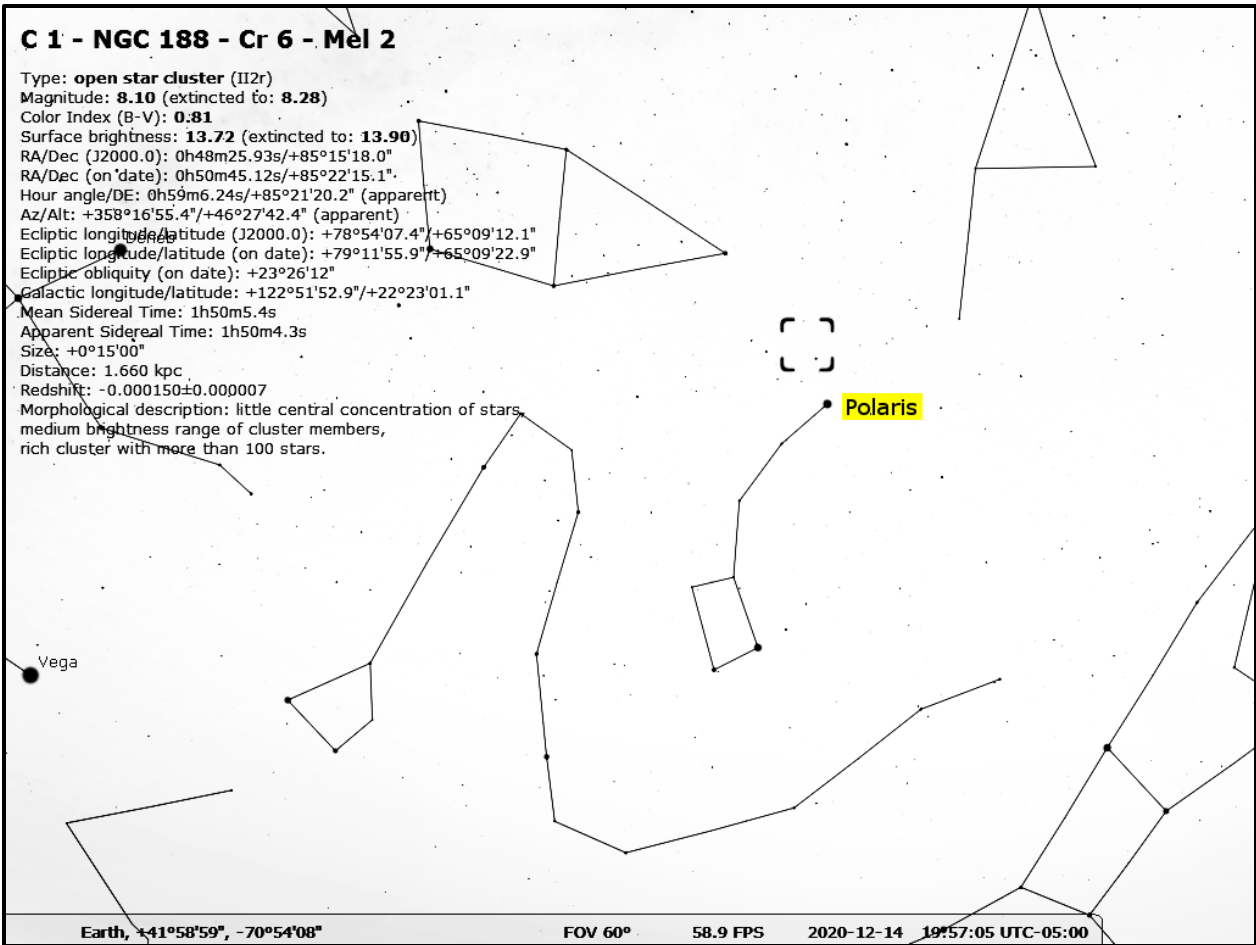


C 1 - NGC 188 - Cr 6 - Mel 2

Type: **open star cluster** (IIr)
Magnitude: **8.10** (extincted to: **8.28**)
Color Index (B-V): **0.81**
Surface brightness: **13.72** (extincted to: **13.90**)
RA/Dec (J2000.0): 0h48m25.93s/+85°15'18.0"
RA/Dec (on date): 0h50m45.12s/+85°22'15.1"
Hour angle/DE: 0h59m6.24s/+85°21'20.2" (apparent)
Az/Alt: +358°16'55.4"/+46°27'42.4" (apparent)
Ecliptic longitude/latitude (J2000.0): +78°54'07.4"/+65°09'12.1"
Ecliptic longitude/latitude (on date): +79°11'55.9"/+65°09'22.9"
Ecliptic obliquity (on date): +23°26'12"
Galactic longitude/latitude: +122°51'52.9"/+22°23'01.1"
Mean Sidereal Time: 1h50m5.4s
Apparent Sidereal Time: 1h50m4.3s
Size: +0°15'00"
Distance: 1.660 kpc
Redshift: -0.000150±0.000007
Morphological description: little central concentration of stars, medium brightness range of cluster members, rich cluster with more than 100 stars.



Earth, +41°58'59", -70°54'08"

FOV 60°

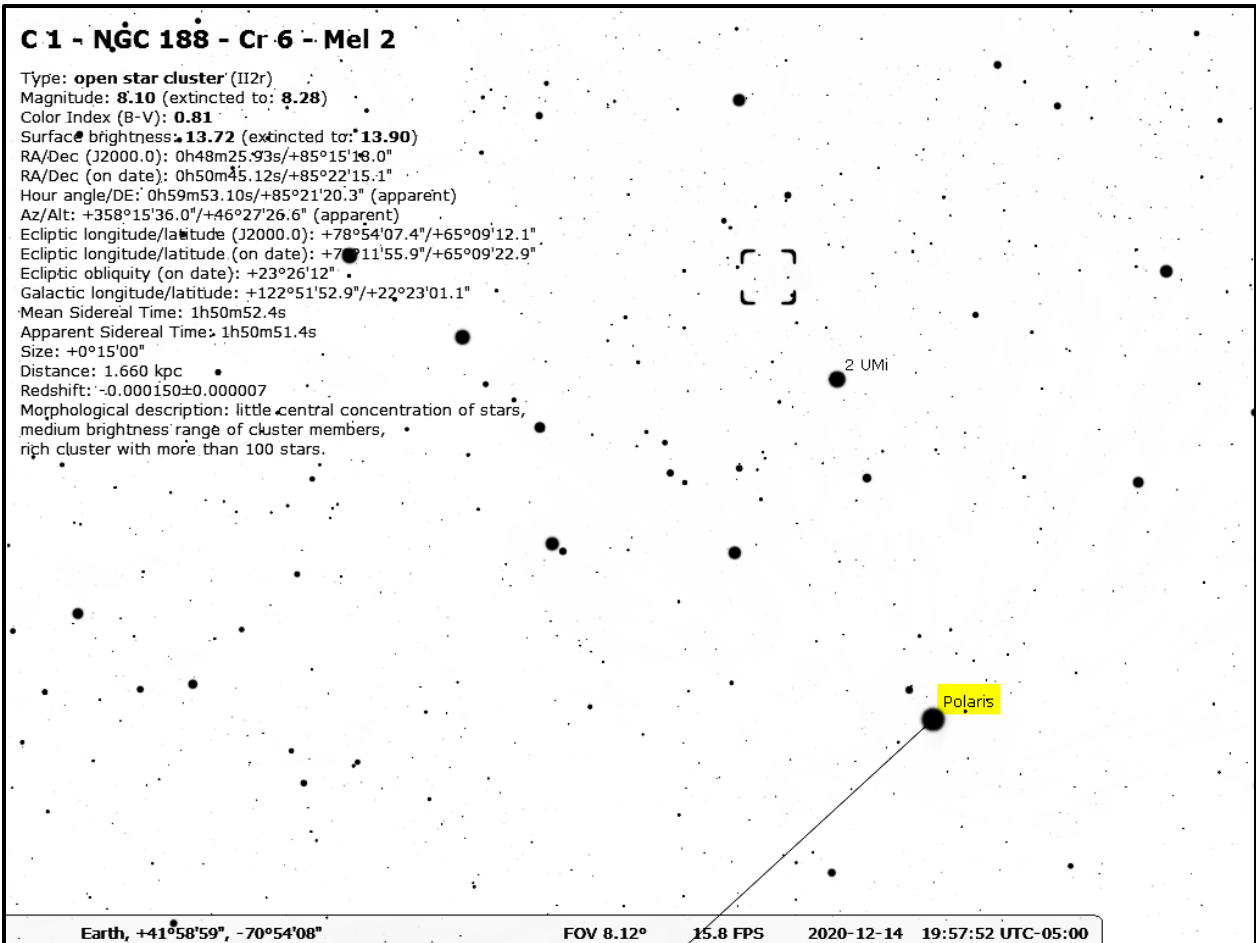
58.9 FPS

2020-12-14

19:57:05 UTC-05:00

C 1 - NGC 188 - Cr 6 - Mel 2

Type: **open star cluster** (IIr)
Magnitude: **8.10** (extincted to: **8.28**)
Color Index (B-V): **0.81**
Surface brightness: **13.72** (extincted to: **13.90**)
RA/Dec (J2000.0): 0h48m25.93s/+85°15'18.0"
RA/Dec (on date): 0h50m45.12s/+85°22'15.1"
Hour angle/DE: 0h59m53.10s/+85°21'20.3" (apparent)
Az/Alt: +358°15'36.0"/+46°27'26.6" (apparent)
Ecliptic longitude/latitude (J2000.0): +78°54'07.4"/+65°09'12.1"
Ecliptic longitude/latitude (on date): +79°11'55.9"/+65°09'22.9"
Ecliptic obliquity (on date): +23°26'12"
Galactic longitude/latitude: +122°51'52.9"/+22°23'01.1"
Mean Sidereal Time: 1h50m52.4s
Apparent Sidereal Time: 1h50m51.4s
Size: +0°15'00"
Distance: 1.660 kpc
Redshift: -0.000150±0.000007
Morphological description: little central concentration of stars, medium brightness range of cluster members, rich cluster with more than 100 stars.



Earth, +41°58'59", -70°54'08"

FOV 8.12°

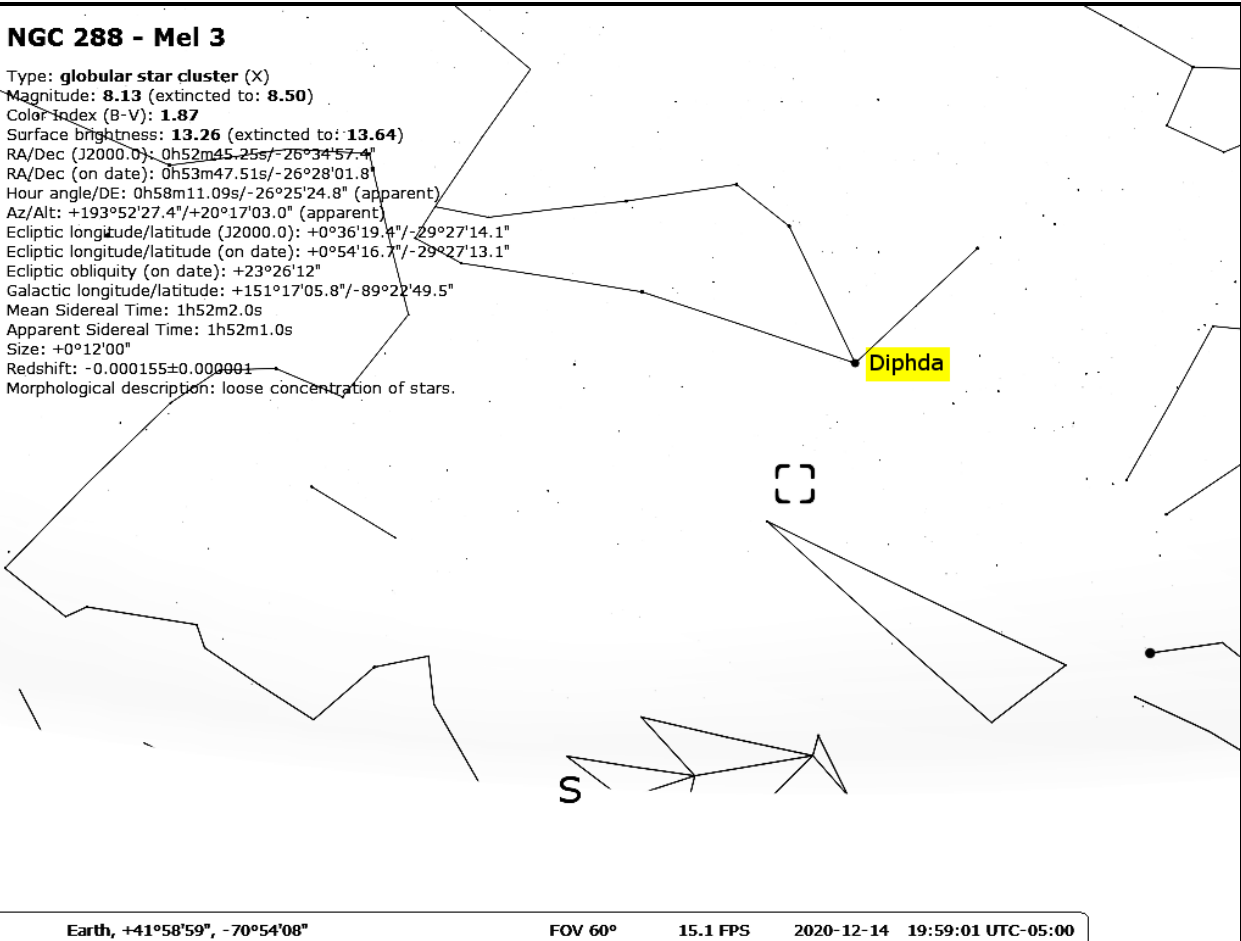
15.8 FPS

2020-12-14

19:57:52 UTC-05:00

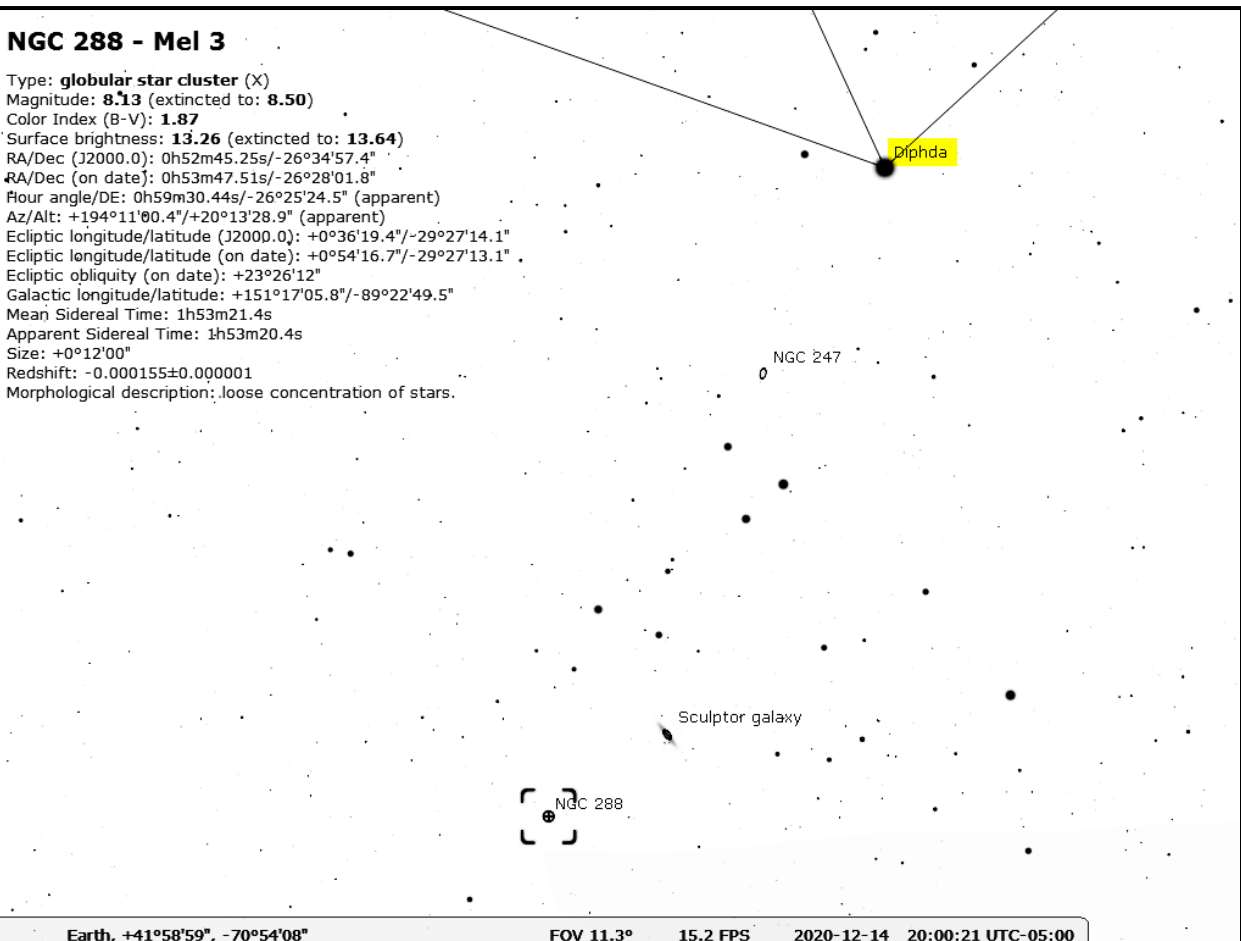
NGC 288 - Mel 3

Type: **globular star cluster (X)**
Magnitude: **8.13** (extincted to: **8.50**)
Color Index (B-V): **1.87**
Surface brightness: **13.26** (extincted to: **13.64**)
RA/Dec (J2000.0): 0h52m45.25s/-26°34'57.4"
RA/Dec (on date): 0h53m47.51s/-26°28'01.8"
Hour angle/DE: 0h58m11.09s/-26°25'24.8" (apparent)
Az/Alt: +193°52'27.4"/+20°17'03.0" (apparent)
Ecliptic longitude/latitude (J2000.0): +0°36'19.4"/-29°27'14.1"
Ecliptic longitude/latitude (on date): +0°54'16.7"/-29°27'13.1"
Ecliptic obliquity (on date): +23°26'12"
Galactic longitude/latitude: +151°17'05.8"/-89°22'49.5"
Mean Sidereal Time: 1h52m2.0s
Apparent Sidereal Time: 1h52m1.0s
Size: +0°12'00"
Redshift: -0.000155±0.000001
Morphological description: loose concentration of stars.



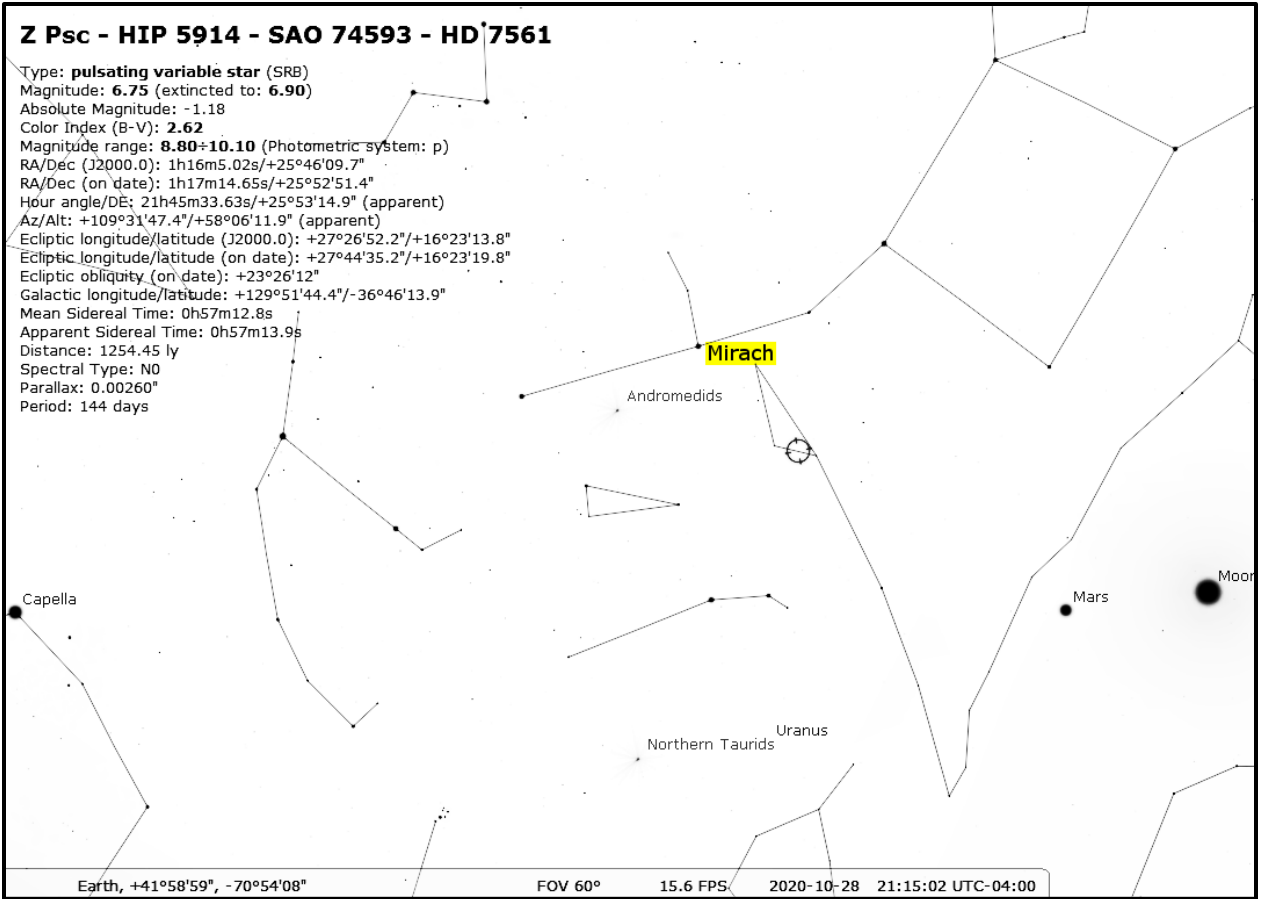
NGC 288 - Mel 3

Type: **globular star cluster (X)**
Magnitude: **8.13** (extincted to: **8.50**)
Color Index (B-V): **1.87**
Surface brightness: **13.26** (extincted to: **13.64**)
RA/Dec (J2000.0): 0h52m45.25s/-26°34'57.4"
RA/Dec (on date): 0h53m47.51s/-26°28'01.8"
Hour angle/DE: 0h59m30.44s/-26°25'24.5" (apparent)
Az/Alt: +194°11'00.4"/+20°13'28.9" (apparent)
Ecliptic longitude/latitude (J2000.0): +0°36'19.4"/-29°27'14.1"
Ecliptic longitude/latitude (on date): +0°54'16.7"/-29°27'13.1"
Ecliptic obliquity (on date): +23°26'12"
Galactic longitude/latitude: +151°17'05.8"/-89°22'49.5"
Mean Sidereal Time: 1h53m21.4s
Apparent Sidereal Time: 1h53m20.4s
Size: +0°12'00"
Redshift: -0.000155±0.000001
Morphological description: loose concentration of stars.



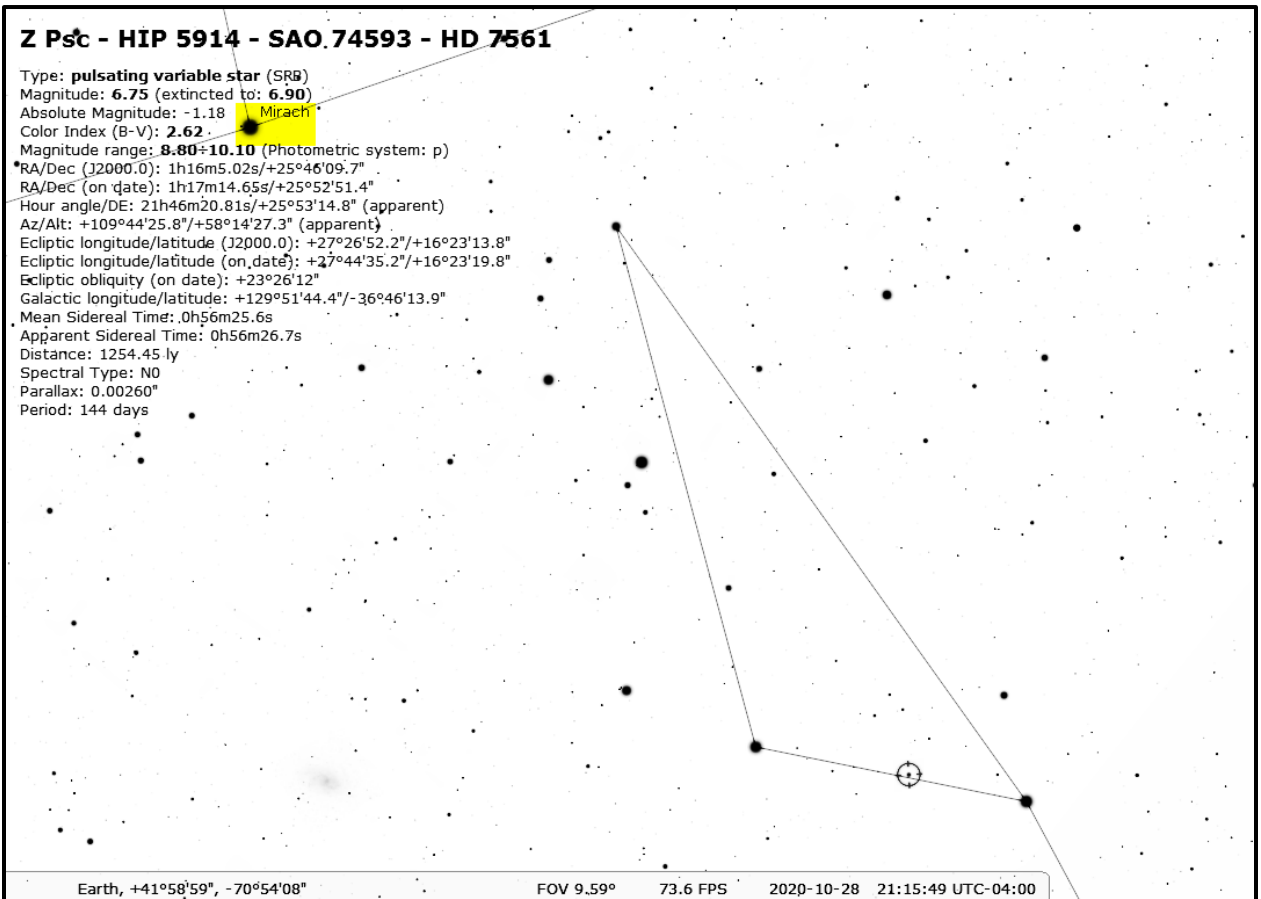
Z Psc - HIP 5914 - SAO 74593 - HD 7561

Type: **pulsating variable star (SRB)**
Magnitude: **6.75** (extincted to: **6.90**)
Absolute Magnitude: -1.18
Color Index (B-V): **2.62**
Magnitude range: **8.80±10.10** (Photometric system: p)
RA/Dec (J2000.0): 1h16m5.02s/+25°46'09.7"
RA/Dec (on date): 1h17m14.65s/+25°52'51.4"
Hour angle/DE: 21h45m33.63s/+25°53'14.9" (apparent)
Az/Alt: +109°31'47.4"/+58°06'11.9" (apparent)
Ecliptic longitude/latitude (J2000.0): +27°26'52.2"/+16°23'13.8"
Ecliptic longitude/latitude (on date): +27°44'35.2"/+16°23'19.8"
Ecliptic obliquity (on date): +23°26'12"
Galactic longitude/latitude: +129°51'44.4"/-36°46'13.9"
Mean Sidereal Time: 0h57m12.8s
Apparent Sidereal Time: 0h57m13.9s
Distance: 1254.45 ly
Spectral Type: N0
Parallax: 0.00260"
Period: 144 days



Z Psc - HIP 5914 - SAO 74593 - HD 7561

Type: **pulsating variable star (SRB)**
Magnitude: **6.75** (extincted to: **6.90**)
Absolute Magnitude: -1.18
Color Index (B-V): **2.62**
Magnitude range: **8.80±10.10** (Photometric system: p)
RA/Dec (J2000.0): 1h16m5.02s/+25°46'09.7"
RA/Dec (on date): 1h17m14.65s/+25°52'51.4"
Hour angle/DE: 21h46m20.81s/+25°53'14.8" (apparent)
Az/Alt: +109°44'25.8"/+58°14'27.3" (apparent)
Ecliptic longitude/latitude (J2000.0): +27°26'52.2"/+16°23'13.8"
Ecliptic longitude/latitude (on date): +27°44'35.2"/+16°23'19.8"
Ecliptic obliquity (on date): +23°26'12"
Galactic longitude/latitude: +129°51'44.4"/-36°46'13.9"
Mean Sidereal Time: 0h56m25.6s
Apparent Sidereal Time: 0h56m26.7s
Distance: 1254.45 ly
Spectral Type: N0
Parallax: 0.00260"
Period: 144 days



Little Dumbbell M 76 - NGC 650

Type: **planetary nebula**
Magnitude: **10.10** (extincted to: **10.23**)
Surface brightness: **11.98** (extincted to: **12.11**)
RA/Dec (J2000.0): 1h42m19.95s/+51°34'31.2"
RA/Dec (on date): 1h43m40.99s/+51°40'56.0"
Hour angle/DE: 0h10m44.67s/+51°40'45.8" (apparent)
Az/Alt: +350°14'12.6"/+80°07'58.9" (apparent)
Ecliptic longitude/latitude (J2000.0): +44°51'41.8"/+37°44'10.6"
Ecliptic longitude/latitude (on date): +45°09'27.5"/+37°44'18.9"
Ecliptic obliquity (on date): +23°26'12"
Galactic longitude/latitude: +130°56'03.5"/-10°30'14.1"
Mean Sidereal Time: 1h54m28.9s
Apparent Sidereal Time: 1h54m25.9s
Size: +0°03'07" x +0°02'18"
Orientation angle: 90°
Distance: 0.780 kpc
Redshift: -0.000064

Almaak

Earth, +41°58'59", -70°54'08"

FOV 60°

15.9 FPS

2020-12-14

20:01:26 UTC-05:00

Little Dumbbell M 76 - NGC 650

Type: **planetary nebula**
Magnitude: **10.10** (extincted to: **10.23**)
Surface brightness: **11.98** (extincted to: **12.11**)
RA/Dec (J2000.0): 1h42m19.95s/+51°34'31.2"
RA/Dec (on date): 1h43m40.99s/+51°40'56.0"
Hour angle/DE: 0h11m47.53s/+51°40'45.8" (apparent)
Az/Alt: +349°18'44.6"/+80°05'54.5" (apparent)
Ecliptic longitude/latitude (J2000.0): +44°51'41.8"/+37°44'10.6"
Ecliptic longitude/latitude (on date): +45°09'27.5"/+37°44'18.9"
Ecliptic obliquity (on date): +23°26'12"
Galactic longitude/latitude: +130°56'03.5"/-10°30'14.1"
Mean Sidereal Time: 1h55m29.8s
Apparent Sidereal Time: 1h55m28.8s
Size: +0°03'07" x +0°02'18"
Orientation angle: 90°
Distance: 0.780 kpc
Redshift: -0.000064

Almaak

Nembus

φ Per

Earth, +41°58'59", -70°54'08"

FOV 11.3°

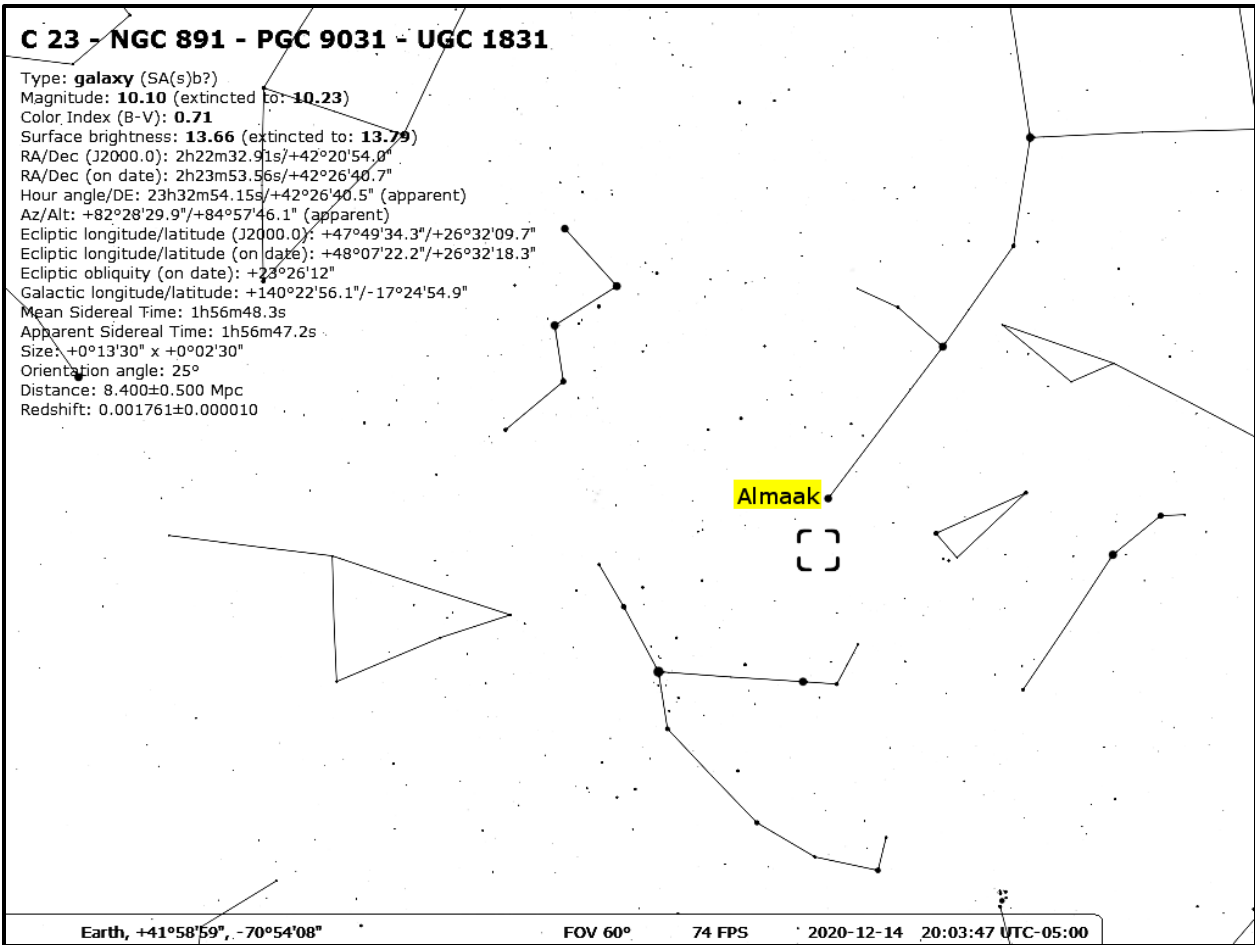
70.6 FPS

2020-12-14

20:02:29 UTC-05:00

C 23 - NGC 891 - PGC 9031 - UGC 1831

Type: **galaxy** (SA(s)b?)
Magnitude: **10.10** (extincted to: **10.23**)
Color Index (B-V): **0.71**
Surface brightness: **13.66** (extincted to: **13.79**)
RA/Dec (J2000.0): 2h22m32.91s/+42°20'54.0"
RA/Dec (on date): 2h23m53.56s/+42°26'40.7"
Hour angle/DE: 23h32m54.15s/+42°26'40.5" (apparent)
Az/Alt: +82°28'29.9"/+84°57'46.1" (apparent)
Ecliptic longitude/latitude (J2000.0): +47°49'34.3"/+26°32'09.7"
Ecliptic longitude/latitude (on date): +48°07'22.2"/+26°32'18.3"
Ecliptic obliquity (on date): +23°26'12"
Galactic longitude/latitude: +140°22'56.1"/-17°24'54.9"
Mean Sidereal Time: 1h56m48.3s
Apparent Sidereal Time: 1h56m47.2s
Size: +0°13'30" x +0°02'30"
Orientation angle: 25°
Distance: 8.400±0.500 Mpc
Redshift: 0.001761±0.000010



C 23 - NGC 891 - PGC 9031 - UGC 1831

Type: **galaxy** (SA(s)b?)
Magnitude: **10.10** (extincted to: **10.23**)
Color Index (B-V): **0.71**
Surface brightness: **13.66** (extincted to: **13.79**)
RA/Dec (J2000.0): 2h22m32.91s/+42°20'54.0"
RA/Dec (on date): 2h23m53.56s/+42°26'40.7"
Hour angle/DE: 23h33m52.68s/+42°26'40.4" (apparent)
Az/Alt: +82°21'42.7"/+85°08'32.9" (apparent)
Ecliptic longitude/latitude (J2000.0): +47°49'34.3"/+26°32'09.7"
Ecliptic longitude/latitude (on date): +48°07'22.2"/+26°32'18.3"
Ecliptic obliquity (on date): +23°26'12"
Galactic longitude/latitude: +140°22'56.1"/-17°24'54.9"
Mean Sidereal Time: 1h57m46.8s
Apparent Sidereal Time: 1h57m45.8s
Size: +0°13'30" x +0°02'30"
Orientation angle: 25°
Distance: 8.400±0.500 Mpc
Redshift: 0.001761±0.000010

