

# July In Review

...and then some



# 2020 JULY

SUN

MON

TUE

WED

THU

FRI

SAT

1 SSAS  
Virtual  
Meeting

2

3

4

5

6

LOOKED

8

9

10

11

12

13

14

15

16

17

18

AT

19

20

21

22

23

24

25

26

27

28

29

30

31

COMET

# South Shore Astronomical Society

Since 1958

## Observing Objectives – July '20



*A sampling of some rewarding night-sky treats for this month:*

Open Cluster – M24, the Great Sagittarius Star Cloud.

Globular Cluster – M22, the second-largest globular in the night sky.

Double Star – Albireo, because you can't go through the summer without it.

Planetary Nebula – M27, a big, bright planetary nebula in Vulpecula.

Galaxies – M101 – well positioned for a try with binoculars around new moon.

Comet – C2017 T2 Panstarrs, the comet that keeps on giving...and giving.

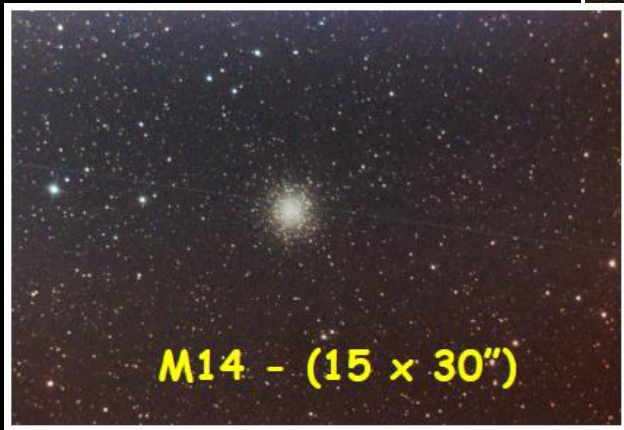
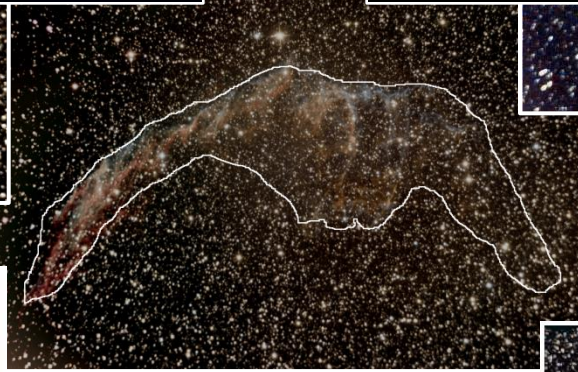
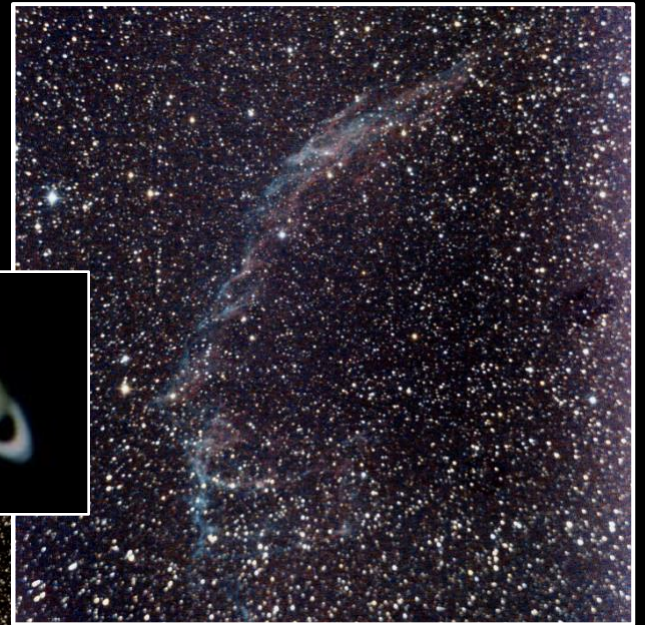
Mercury – culminates on the 24<sup>th</sup>/25<sup>th</sup> – look east at around 05:00.

Venus – continues being the 'Morning Star' – the crescent grows fatter.

Jupiter and Saturn – culminate at 01:00 mid-month, well positioned by 23:00.

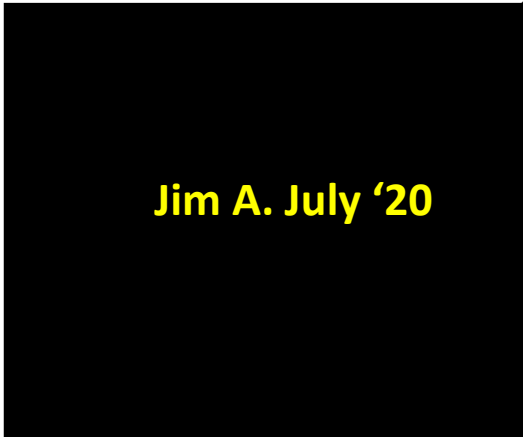
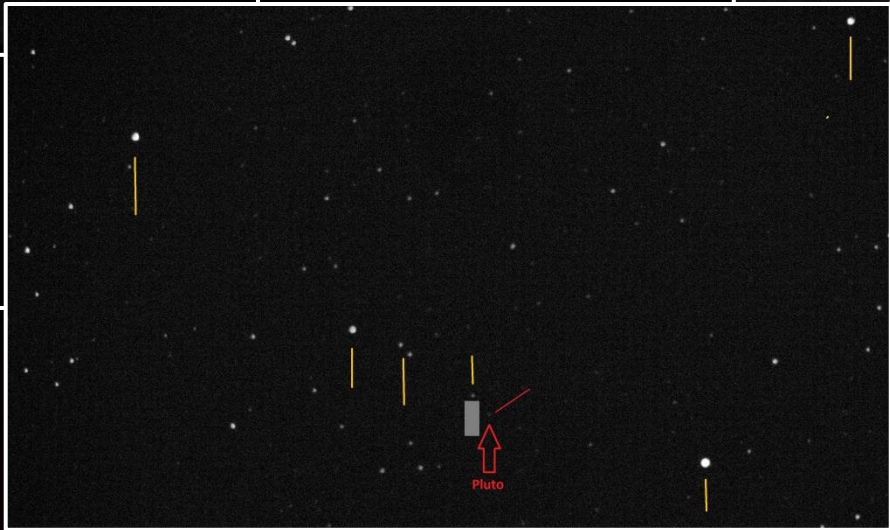
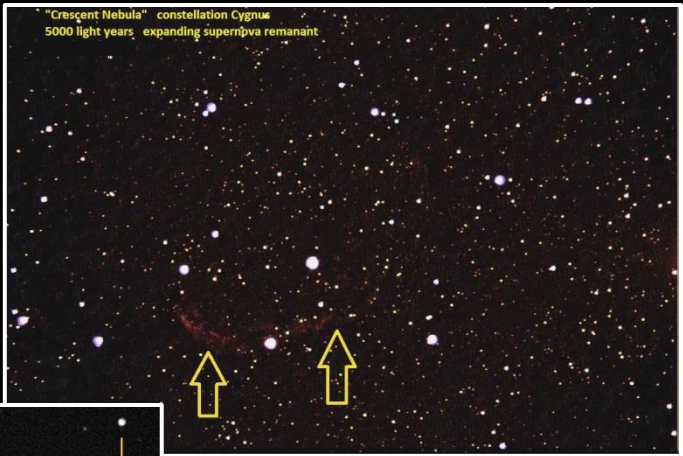
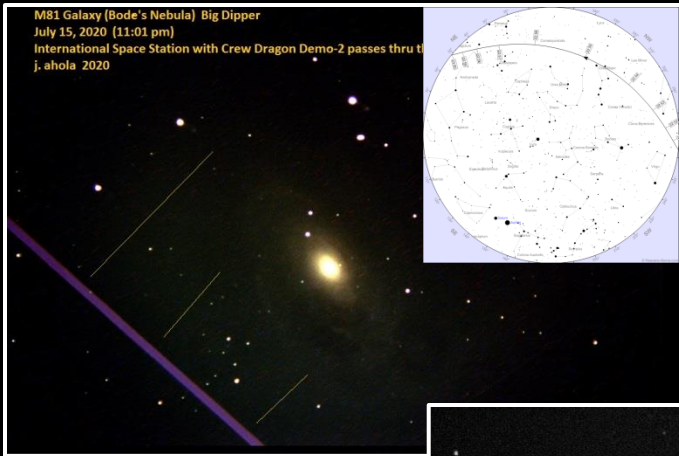
Mars – rises before midnight the end of the month.

Notable Dates: Independence Day – 7/4 Full Moon – 7/5 New Moon – 7/20



**Carl B. - July '20**

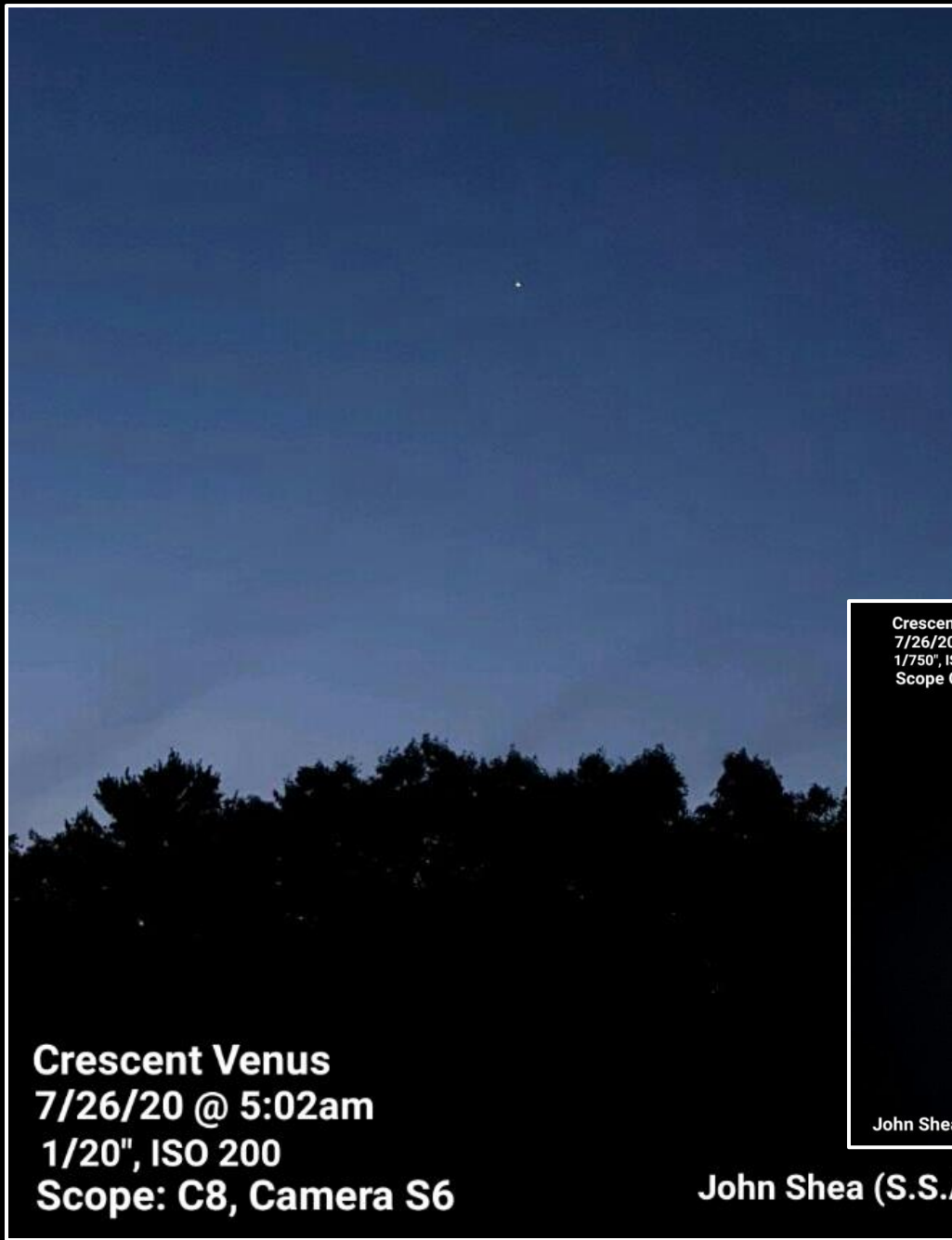




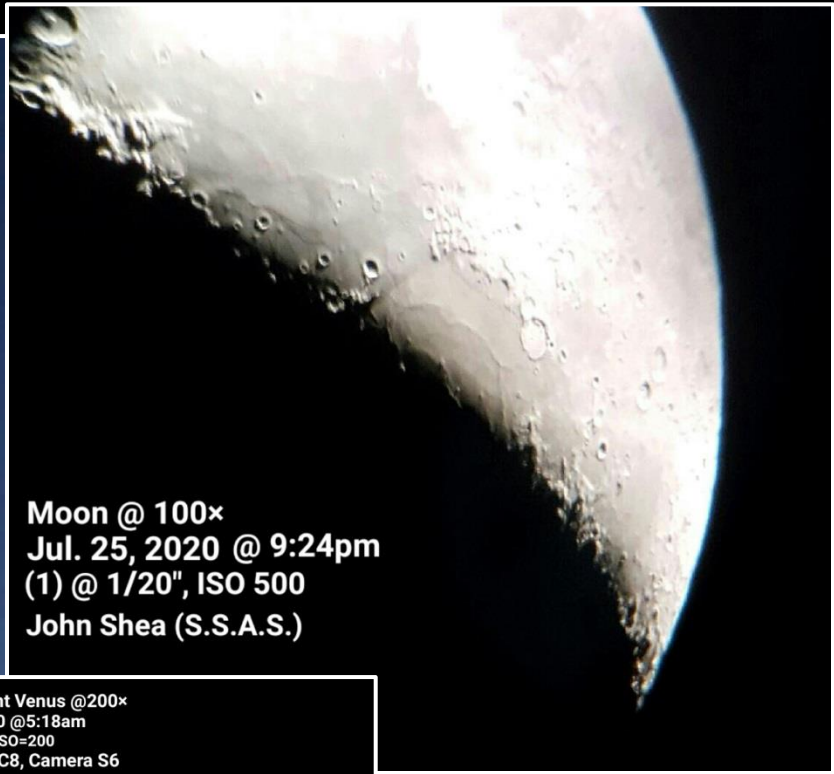
j. ahola 2020

Pluto July 31, 2020





**Crescent Venus**  
**7/26/20 @ 5:02am**  
**1/20", ISO 200**  
**Scope: C8, Camera S6**



**Moon @ 100x**  
**Jul. 25, 2020 @ 9:24pm**  
**(1) @ 1/20", ISO 500**  
**John Shea (S.S.A.S.)**



**Crescent Venus @200x**  
**7/26/20 @5:18am**  
**1/750", ISO=200**  
**Scope C8, Camera S6**

John Shea (S.S.A.S.)

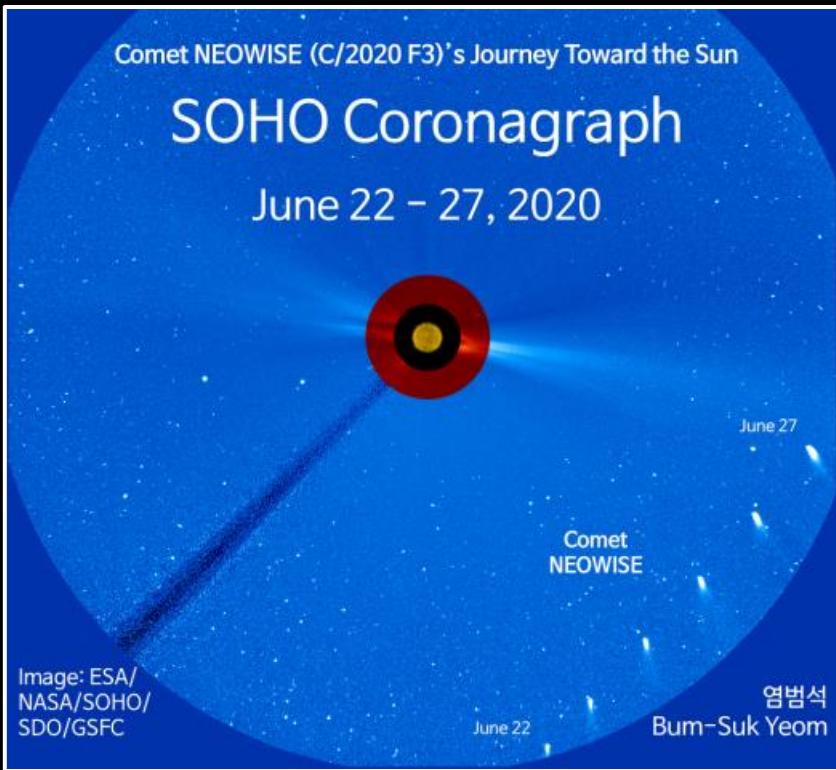


**Crescent Venus @ 100 x**  
**7/26/20 @ 5:16 am**  
**1/20", ISO=200**  
**Scope C8, Camera S6**

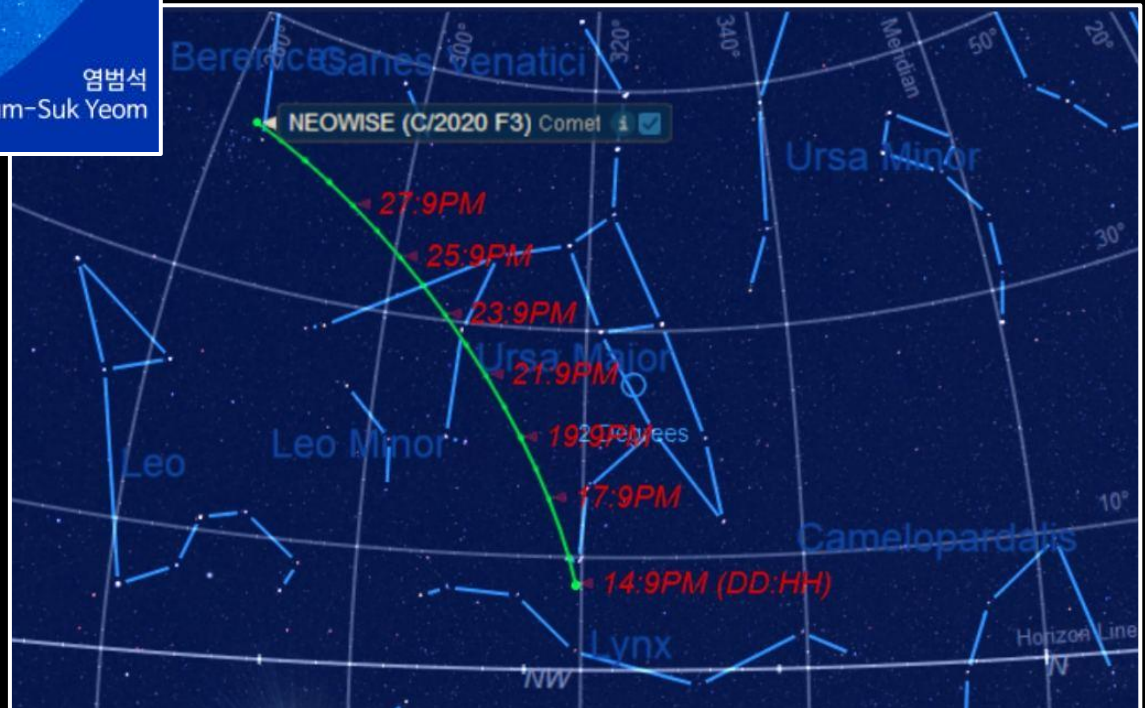
John Shea (S.S.A.S.)

**John Shea (S.S.A.S.)**





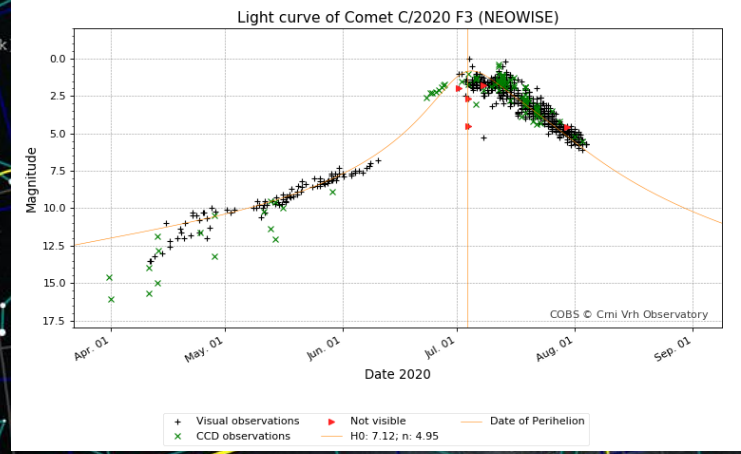
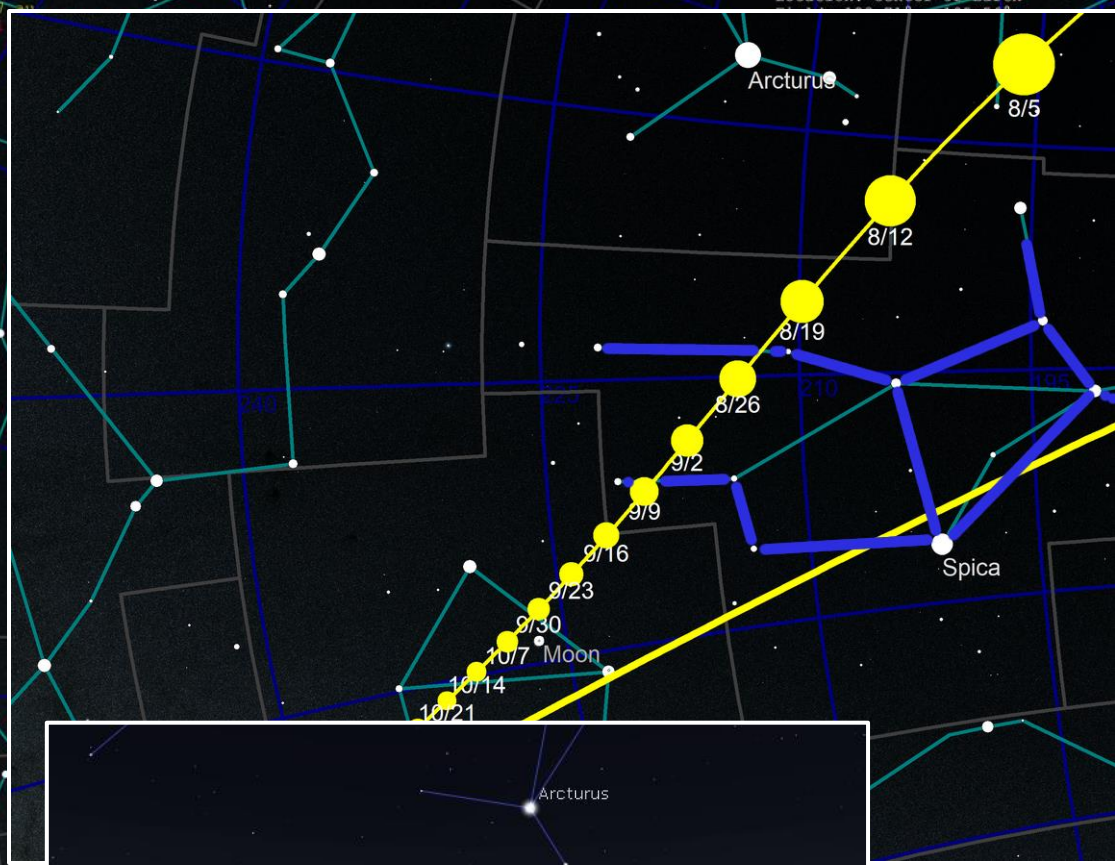
# C2020 F3 NEOWISE



1.146 ER (368973.9836 km)  
0.5628 au  
0167 au  
1.2347 au

2020 Jul 01 5:00:00 UT  
Location: Center of Earth  
Field: 123.73° x 105.56°  
Background: ESA Gaia DR2 AllSky [16k]





10\* altitude @ Full Dark

9/5

Arcturus

W

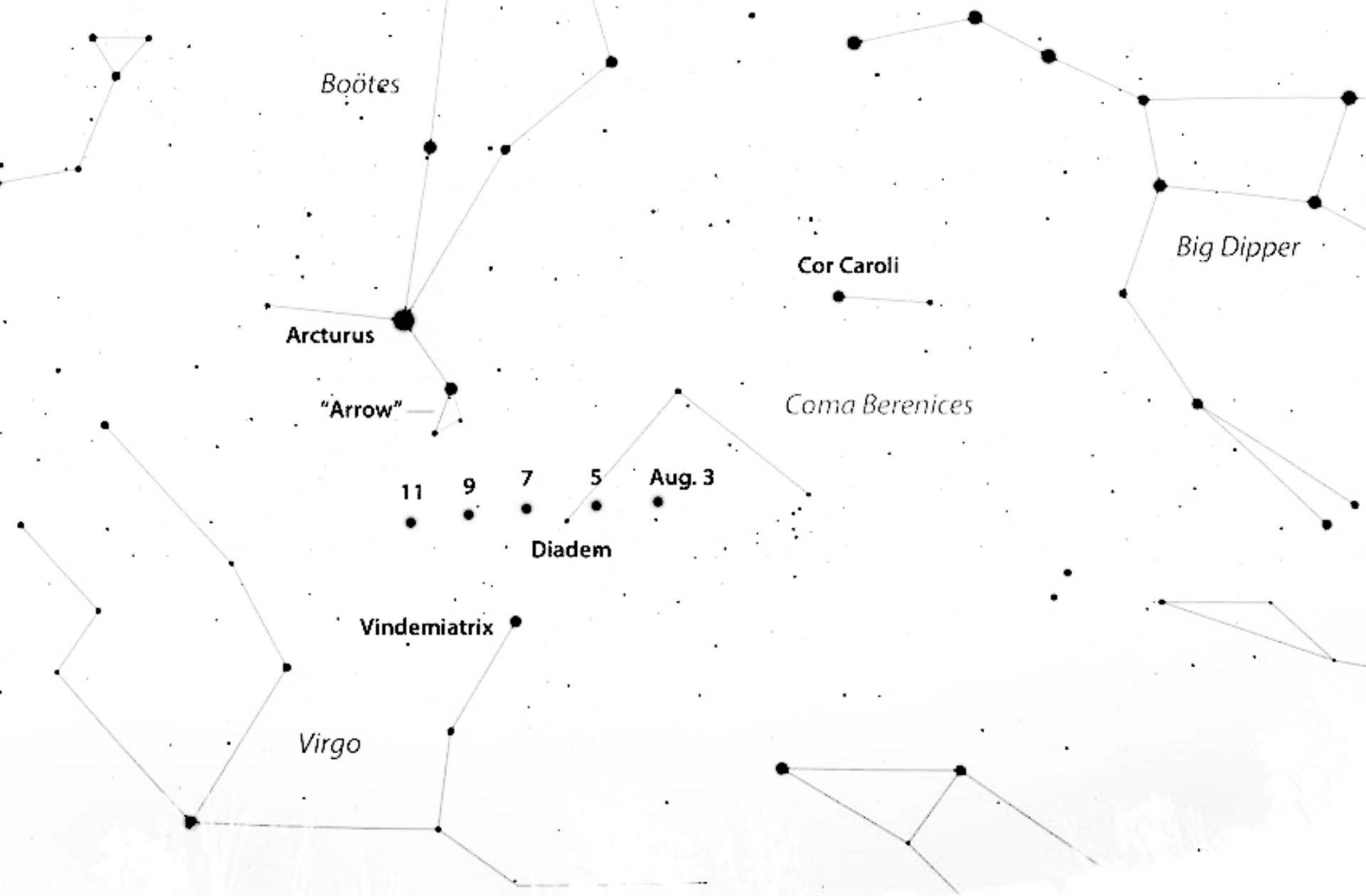
Date and Time		Julian Day	
2020	/	9	/
		5	
		20	:
		58	:
		6	

Arcturus

W

9/5 8/15 8/5

Date and Time		Julian Day	
2020	/	8	/
		15	
		21	:
		31	:
		35	



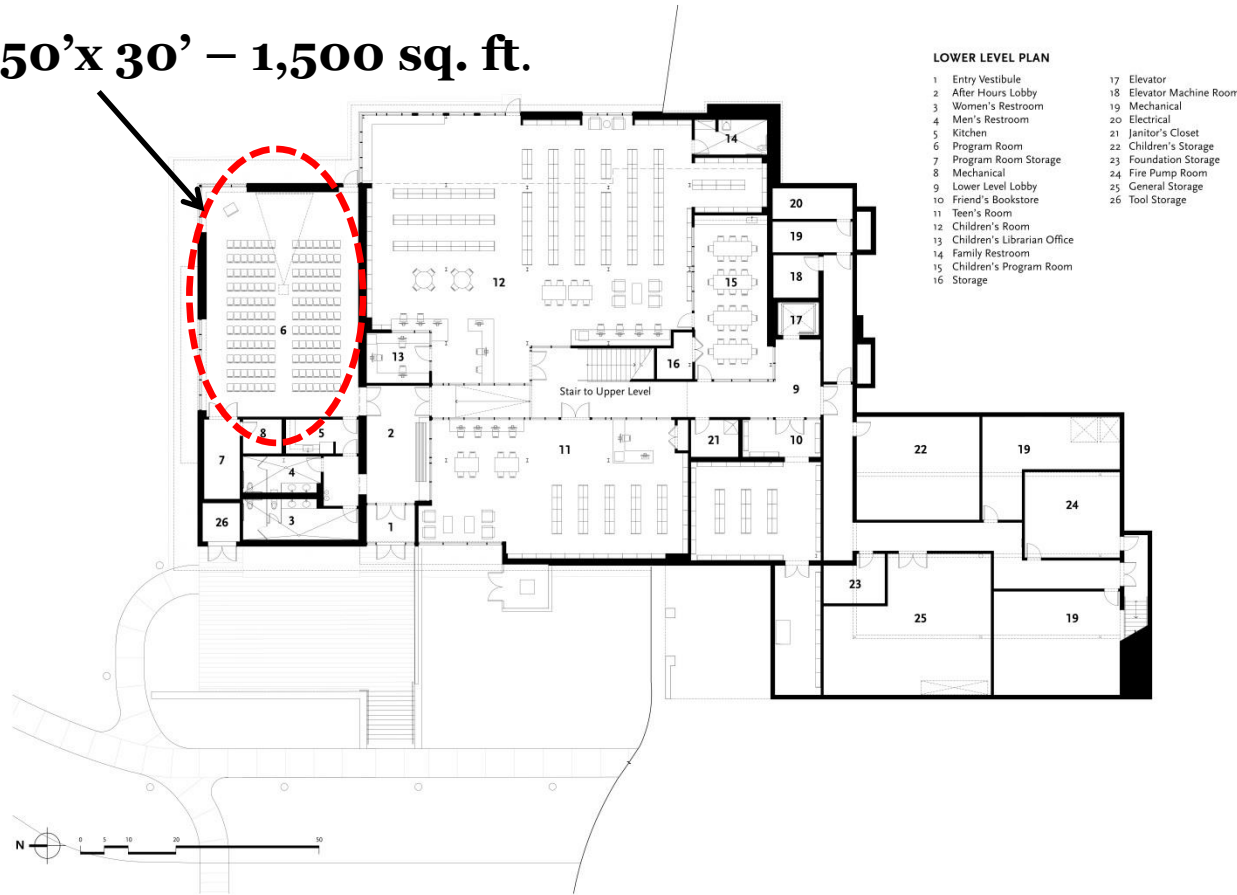
*Facing west at the end of evening twilight (about 10 p.m. local time) Aug. 3-11*



# Club Business

- Virtual meetings to continue ...

50'x 30' – 1,500 sq. ft.



**Massachusetts  
Phase 3  
Reopening:**

**25ppl indoors,  
8/1000 sq. ft.**

**Library  
Community Rm.  
Capacity:**

**Pre-CoVid, 150**

**Phase 3 – 12**



# Club Business



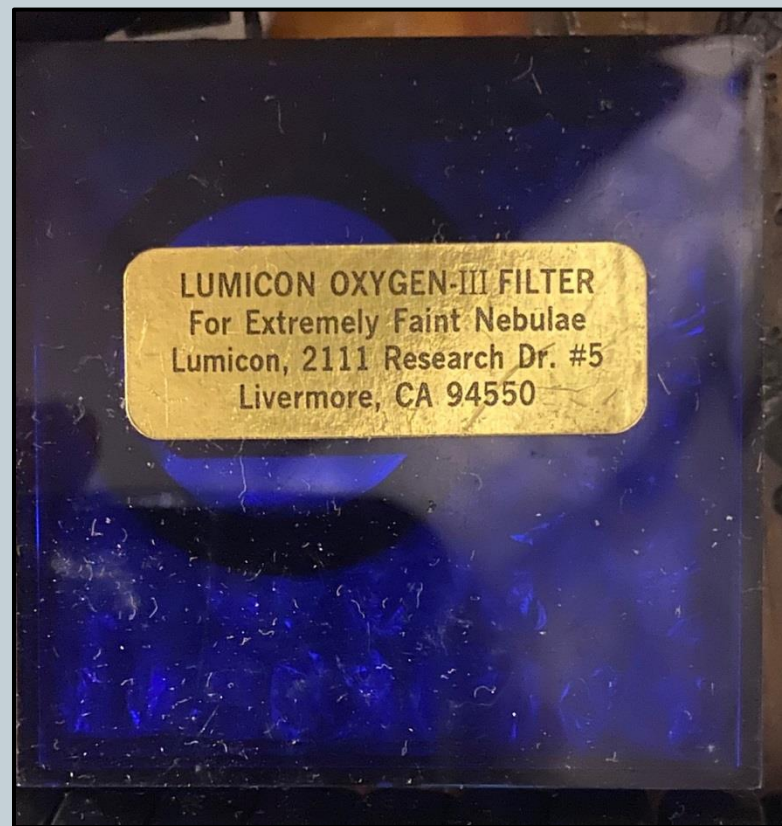


# Club Business





# Club Business







# Club Business



**CELESTAR**  

---

**INSTRUCTION MANUAL**

1



**Advanced Astro Master**  
**Operating Manual**



# Club Business



## Website Update

### *SOUTH SHORE ASTRONOMICAL SOCIETY*

- Home
- About Us
- Club By-Laws
- Club History
- Community Outreach
- Directions
- Events
- Hints for Visitors
- Links
- Mal's Downloads
- Membership Information
  - Member's Only
  - Moon Info, etc.
- New to Astronomy?
  - Officers
  - Picture Gallery
  - Skip's Astro Trivia
  - Viewing Forecast
  - What's Up?  
(updated 8/5/20)

Visit us on



*Celebrating 62 Years!!!*

**We are a group of Amateur Astronomers from the communities south of Boston. Since 1958, we have shared our interest in astronomy with our members, guests and local residents.**

**We are an inclusive group that welcomes all those with similar interests.**



Member of the  
Astronomical League



**Next meeting**  
**August 5, 2020**  
**7:00 PM**

**Note: The August 5<sup>th</sup> meeting may be held online.**  
**Otherwise it will be at the**  
**Scituate Town Library**  
**85 Branch St.**  
**Scituate, MA**

**Check back here as the date gets closer for details.**

*Click here for a complete list of events.*

# South Shore Astronomical Society

Since 1958

## Observing Objectives – August '20



*A sampling of some rewarding night-sky treats for this month:*

**Open Cluster** – M20, Trifid Nebula, Observer's Challenge object for this month.

**Globular Cluster** – M71 in Sagitta. Loose concentration, relatively young.

**Double Star** – Xi Sco and Struve 1999 – a Scorpius double double!

**Planetary Nebula** – NGC 6818, the Little Gem nebula in Sagittarius.

**Galaxies** – NGC 6822, aka C57 – Barnard's Galaxy in Sagittarius.

**Comet** – C/2020 F3 NEOWISE – Still a solid binocular object in early August.

**Mercury** – Poorly placed throughout most of this month.

**Venus** – Hits greatest western elongation on the 13<sup>th</sup>, see it at 50% phase.

**Mars** – grows to 16.5" by mid-month, 18.8" by month's end.

**Jupiter** – Look for moon shadow transits and the Great Red Spot – prime time!

**Saturn** – Also prime time, can anything trump those rings???

**By Day: The Sun** – rising from its slumber of minima lately, see active regions.

**Notable Dates:** Full Moon – 8/3    Persieds Peak – 8/12    New Moon – 8/18

# SSAS Summer Star Party

- **When** – Thursday, August 13 to Sunday, August 16
  - **Where** – Hazen's Notch Campground, Lowell, VT
  - **What** – Camping and Dark-Sky Observing
  - **Cost** - \$35 a night per group of four (camping only)
  - If you're interested in participating in this event, please contact the campground and make your reservations. Be sure to mention your club affiliation so that they know you're coming as part of the group.
  - **Website:** <http://hazens-notch-campground.com/wp/>
  - **Phone:** (802) 744-6612
- N.44° 49' 34.8204" (44.826339°)  
W.72° 28' 59.5884" (72.483219°)

See You There!

*The*

**BIG**

**DOOR**

**PRIZE**

*Clear Skies!*

