



PRESIDENT . . . JOHN NICHOLSON
EDITOR . . . MARK GIBSON

August, 1978
Number 22

August - Wednesday Meeting of the SSAS at the Nature Center
8 p.m.
August 13 Sunday Lunar and planetary observing session at the
Nature Center. For information, call Jerry
(746-3797) Bring insect repellant.
Astrophotography at home of George East. Call George for date
and time (963-2265).

NOTICE TO ALL MEMBERS

In conformity with Article IX, Section 1 of the BY-LAWS, notice is hereby given that at the August meeting of the Society it will be proposed that the BY-LAWS be amended to increase the present membership dues from \$12 per year to \$14 per year commencing immediately in order to compensate for the \$2 per year raise in the subscription rate of Sky & Telescope which took place commencing July of 1978.

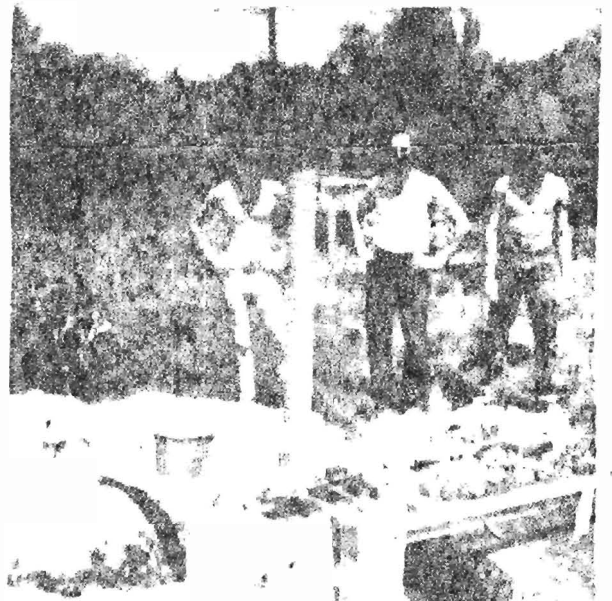
Richard E. Cutler, Treasurer

"Almost Finished"

The club telescope is almost finished and with more turnouts on Saturdays like we've been having, it will be done in no time. For the last few Saturdays, the hardest part was constructing the pier, but it and the platform are completed and the electric wiring is in.

All that has to be done is to build a box, clock drive, align the optics and finish the electric equipment. It sounds like a lot and it is, but it's a lot easier than making the pier! If we get everyone to get together like we have, it won't take much longer to finish our own telescope.

Mark Gibson



THEN AND NOW

As promised in July's newsletter, here is more information on research compiled in 1896 and in 1977. Information for 1896 was compiled from THE PITH OF ASTRONOMY, copyright 1896; for the present, the NORTON STAR ATLAS, 1977.

<u>MARS</u>	1896	Present
Distance from Sun	141,000,000 miles	141,690,000 miles
Diameter	4,200 miles	4,219 miles
Orbital Period	687 days	686.9 days
Rotation Period	24 hours 37 min.	24 hours 33 min.
Moons	2	2
Orbital Speed	15 m/s	15 m/s

"In many ways Mars resembles our earth: it has atmosphere, seasons, land, water, storms, clouds, and mountains; it also snows and rains on Mars, as it does with us. Snow and ice cover both its poles, and produce great white patches at those points, which are clearly seen through a large telescope; such an instrument also shows the markings on the land known as the canals. Fairly accurate maps have been made of Mars, showing its natural divisions of land and water to be about equal."

"Percival Lowell, of Boston, has lately devoted his life and fortune to the observation of Mars. His extended observations lead him to believe that Mars is inhabited by a highly civilized race of beings, who are now carrying on great engineering works, including the famous canals, which have been the subject of so much speculation." From THE PITH OF ASTRONOMY, Samuel G. Bayne, 1896.

<u>JUPITER</u>	1896	Present
Distance from Sun	483,000,000 miles	483,660,000 miles
Diameter	88,000 miles	88,735.92 miles
Orbital Period	11 years, 10 months, 17 days	11 years, 11 months, 15 days
Rotation Period	about 10 hours	9 hours 53 minutes 41 seconds
Moons	5	14
Orbital Speed	8 m/s	8.11 m/s

(to be continued next month)

Mark Gibson